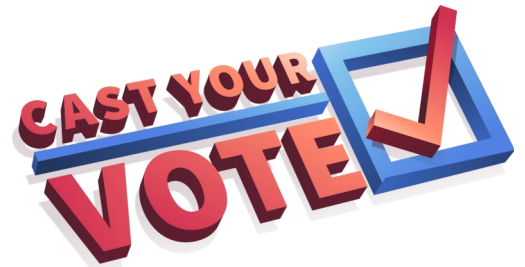


# CAST YOUR VOTE

a game guide for teachers

It's just a few weeks until Election Day, are you ready? In our completely reimagined *Cast Your Vote*, you'll discover what it takes to become an informed voter—from knowing where you stand on important issues to uncovering what you need to know about candidates.



## Learning Objectives

- Establish, explain and apply criteria useful in selecting political leaders.
- Evaluate candidates based on their qualifications, experience, voting record, endorsements, personal qualities, and messaging.
- Evaluate information and arguments from various sources to identify stands taken by candidates on issues.
- Compare different perspectives and prioritize issues according to personal views.

## Prerequisites

None needed! *Cast Your Vote* is designed for students to learn how citizens educate themselves on issues through political debates, research, and discovery and to learn about the importance of making informed choices when voting. Find additional resources, including lesson plans and more games at [www.iCivics.org/teachers](http://www.iCivics.org/teachers).

## HOW TO PLAY THE GAME

### 1. Vote in the Primary!

Oh, you weren't prepared for that were you? Well, not to worry as the game will help you prepare for the election through a series of town hall meetings and apps. As a resident of Isley, it's important to make informed choices!



### 2. Read Your Email

You will be introduced to Ana, who will help guide you through the game and moderate the town hall meetings. Be sure to check back to see if any campaign emails start trickling in as the days tick down to Election Day.

### 3. Take a Survey

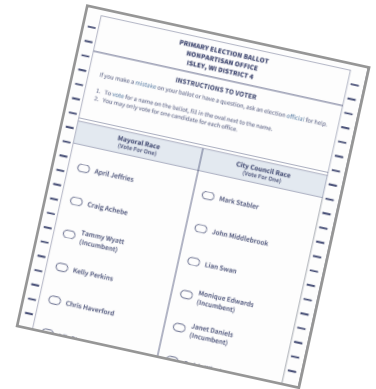
The issues facing the city of Isley are similar to those facing other cities and towns. What issues matter to you? What do you want to see discussed by the candidates and what kind of things are deal breakers for your vote? The survey will offer you a menu from which to choose 5-7 important issues and then pick one as a *must have*. It will help you track the candidates as you play.



## HOW TO PLAY THE GAME

### 4. Preview the Ballot

You will be able to preview the ballot throughout the game, in case you need to remind yourself about who the candidates are and what the propositions are all about.



### 5. Attend a Town Hall

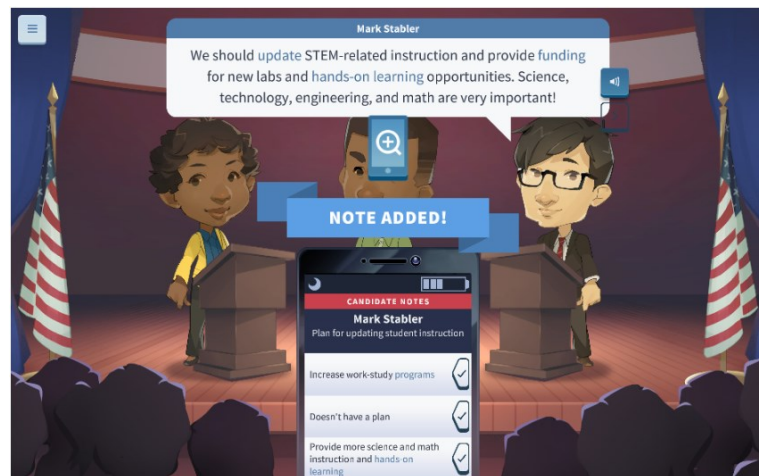
You can check your calendar, or just see the door crack open to figure out when a town hall is happening. These public events are a great way to learn about where the candidates stand on the issues. Each candidate will introduce themselves and explain why they are up for the job. You can ask the questions and help the candidates focus on the issues you care about, or let someone else in the crowd ask. Their questions could be on topic for you, or address another issue in Isley.

### 6. Take Notes

It may seem like a lot to keep track of, but you have a phone to keep your notes in one place. During town halls, you should note every stance the candidates take... even if they don't have a plan!

Keep any eye on the phone's battery, as it will lose power as you work. But don't worry, you automatically get a fresh charge overnight.

You will want to take notes as you learn more about the candidates in the different apps. More on that soon!



### 7. Use Your Notes

All of your notes will be placed into the Candidate Notes app. From there you can see what issues have been discussed by the candidates as well as what you've learned about the propositions on the ballot. You can click on any candidate or proposition to see more information and to flag anything you want to mark as problematic. You will also see issues and policies that you have identified as important in the surveys.



## HOW TO PLAY THE GAME

### 8. The Apps

Your computer acts as the hub for all your election prep activity. You will gain more apps as you play, so let's check them out, all in one spot:

#### EMAIL INBOX\*

You will receive instructions and help from Ana at Get Out The Vote, as well as campaign emails that will help you learn more about the candidates.

#### SURVEYS

These will help you think about the issues and pick the ones you care about. The first is required, and the ones that follow help you narrow down your candidates.

#### BALLOT PREVIEW

Check back here anytime to remind yourself who is on the ballot for what race.



#### CANDIDATE NOTES

All of your notes are here, where you can compare propositions and the candidates across the issues you care about. See something you don't like? Flag it!

#### RESEARCH\*

Town Halls can only tell you so much, so use the Research app to look into each candidate's endorsements, qualifications, and voting history. This is the best place to discover more about the propositions!

#### NEWSABLY LITE\*

Stay on top of campaign news! The feed updates daily with new insights on the candidates and the qualities they may bring to office.

Make sure to review your notes BEFORE you head to the polling place to cast your vote!

**TIP:** Later in the game you will get to upgrade your Candidate Notes app to access the **Profile Analyzer**. It will review your notes and correct anything you may have recorded incorrectly. Use is limited, so make sure you use it wisely!

## 9. Use Your Time Wisely

There is much to learn in days leading up to the election. How you find out more about the candidates and propositions is up to you! Keep track of the days and battery level on the phone while trying to take as many notes as you can!

## Room Guide & Tips

There is a lot of information packed into *Cast Your Vote*. Here are some hints at where to find it all!



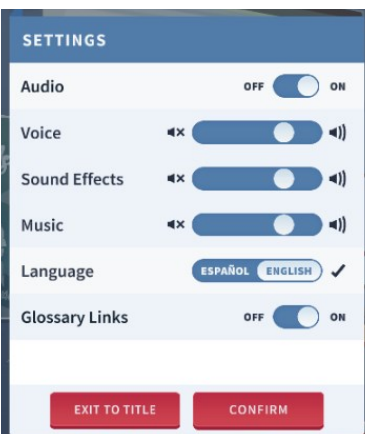
Your **computer screen** will alert you to any new apps, updates to an app, or other important information.

The **calendar** on the wall is a great reference! You can see upcoming events, like a town hall, and track the amount of days left to prepare for the election.

If the **door** is open, you have somewhere to be! This is a sign that there is a Town Hall to attend.

## ELL & Settings Menu

Cast Your Vote lets you customize your game experience with the settings menu at the top left of the screen.



Audio— Turn all sounds off or on for the game.

Voice— Adjust the volume for the character voices.

Sound Effects— Adjust the volume for all of the cool sound effects.

Music— Adjust the volume of the background tunes.



Language— You can switch between Spanish and English at any time in the game.

Glossary Links— These show which words are defined in the game. If you don't want them, you can turn them off here.





# Isley Issues Guide

## GAME GUIDE: CAST YOUR VOTE



**Crime Rate:** The crime rate is rising each year. We need to make our streets safer.



**Juvenile Justice:** Our court system for young offenders is understaffed. Victims and the accused deserve better.



**Civic Engagement:** Isley's young people report not feeling connected to their community and distant from city government. We need stronger civic engagement from our youth.



**Instruction:** Our outdated K-12 curriculum does not serve our students. Classrooms deserve better materials and content.



**Growing Enrollment:** The growth of the city's school-age population has outpaced the size of our schools. Let's find a way to make space for students.



**Summer Programming:** Our city is missing an opportunity to serve the community by not offering summer programming for students. We need to come up with solutions for this.



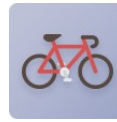
**Health Access:** We are facing a severe shortage of doctors in our hospitals and clinics. The residents of this city deserve better.



**Opioid Crisis:** We must face the opioid crisis head on. The city needs a solution to illegal drug abuse.



**Water Quality:** Runoff from farms has polluted our city's lakes and waterways. We must act to restore these important natural resources.



**Safe Cycling:** City biking is growing in popularity. The safety of cyclists and motorists must be a priority.



**Public Transportation:** For a transportation system to be successful, it must serve all of the city's residents equally. Make equal access a priority.



**Library Updates:** The city library system is an important part of the community. An update will allow it to better serve our residents.



**Tourism:** Tourism to the city has declined in recent years. We must make an effort to bring visitors back.



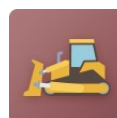
**Green Spaces:** The city lacks public green spaces and parks. Our residents deserve free, clean, and safe places for recreation.



**Minimum Wage:** A national debate over the minimum wage has come to our city. We need a solution that serves both workers and businesses.



**Balanced Growth:** Our city is having a growth spurt, but not all areas are benefiting. We must find ways to share the economic and social development.



**Land Development:** A major food production plant stands empty on the east side of town. The city needs to make the most of this vacant land.

## Isley: Guía de temas



**Índice de delitos:** El índice de delitos aumenta cada año. Debemos hacer que nuestras calles sean más seguras.



**Justicia de menores:** Nuestro sistema judicial para jóvenes delincuentes no cuenta con el personal suficiente. Las víctimas y los acusados merecen algo mejor.



**Participación cívica:** Los jóvenes de esta ciudad dicen sentirse desconectados de su comunidad y del gobierno local. Necesitamos una participación cívica más sólida de los jóvenes.



**Plan de estudios:** Nuestro programa de estudios (K-12) es anticuado e ineficaz. Necesitamos mejores materiales escolares y nuevos contenidos.



**Aumento de las matriculaciones:** El crecimiento de la población escolar de la ciudad ha desbordado nuestras escuelas. Tenemos que crear plazas adicionales para nuestros estudiantes.



**Programación de verano:** Nuestro ayuntamiento no está prestando un servicio adecuado a la comunidad porque no ofrece programas de verano para los estudiantes. Hay que buscar soluciones.



**Acceso a la salud:** Enfrentamos una gran escasez de médicos en nuestros hospitales y clínicas. Los habitantes de esta ciudad merecen algo mejor.



**Crisis de opioides:** Debemos afrontar la crisis de opioides con decisión. La ciudad necesita una solución para el abuso de drogas ilegales.



**Calidad del agua:** La escorrentía de las granjas de la zona ha contaminado los lagos y las vías fluviales de nuestra ciudad. Se deben tomar medidas para restaurar estos recursos naturales importantes.



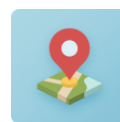
**Ciclismo seguro:** El uso de las bicicletas en la ciudad es cada vez más popular. La seguridad de los ciclistas y los conductores debe ser una prioridad.



**Transporte público:** Para que un sistema de transporte funcione correctamente, debe prestar servicio a todos los residentes de la ciudad por igual. Debemos hacer que el acceso igualitario sea una prioridad.



**Mejoras de la biblioteca:** La red de biblioteca de la ciudad es una parte importante de la comunidad. Una mejora permitirá prestar un servicio superior a nuestros residentes.



**Turismo:** El turismo ha disminuido en la ciudad en los últimos años. Debemos hacer un esfuerzo para atraer a turistas a nuestras comunidades.



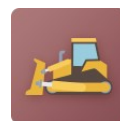
**Espacios verdes:** La ciudad carece de espacios verdes públicos y parques. Nuestros residentes merecen tener lugares seguros, limpios y gratuitos para la recreación.



**Salario mínimo:** El debate nacional sobre el salario mínimo ha llegado a nuestra ciudad. Necesitamos una solución que funcione tanto para los trabajadores como para las empresas.



**Crecimiento equilibrado:** Nuestra ciudad está experimentando un crecimiento repentino, pero no todas las zonas se están beneficiando. Debemos encontrar maneras de compartir el desarrollo social y económico.



**Desarrollo del terreno:** Al este de la ciudad hay una planta abandonada de producción de alimentos. El ayuntamiento debe ocuparse de esos terrenos disponibles y aprovecharlos al máximo.



## CLASSROOM CONVERSATION STARTERS

### Pre-Game Questions

You can use these questions to lead into playing *Cast Your Vote* in the classroom.

- How do you think people prepare before the vote in an election?
- Why is voting important? In national elections? State elections? Local elections?
- What kind of things might you see on a ballot in a city election?
  - Possible Answers: *Candidates for races (mayor, council, school board, etc.), Referendums, Propositions, other Ballot Measures, Details about where you are voting (polling district)*
- Do you know anyone that has run for local office? Or that currently is in elected office?

### Post-Game Questions

Use these questions as a way to debrief the individual experiences of playing *Cast Your Vote*.

- What surprised you in the Town Hall debates? What did you learn that you didn't already know?
- Which issues did you choose? Did you feel the same about those issues after the game ended?
- Are there any similarities between the city of Isley and your own hometown? Do they share any of the same challenges or opportunities?
- What was your strategy to become a prepared voter?
  - Possible Answers: *Attend all town halls, spend more time in researching, stay on top of the news, focus on a few candidates or learn as much as you could about all?*
- What did you think about the propositions? Which ones might be seen in a community like yours?

### Activity Ideas

Looking to extend the learning experience? Here are a few ideas to get you and your students started.

- Ask students to select one of the issues and write a short speech about why it's important to them (or the city of Isley).
- Ask students to research an upcoming or recent municipal election to see what offices and ballot measures were up for a vote. Have them discuss what the candidates said about the issues, etc.
- Have students create their own platform based on the issues that they are most interested in. Have them create a campaign speech or a poster where they introduce themselves, talk about their experience, and explain their stance on the issues.



The **Cast Your Vote Extension Pack** is now available! Make your students' game play more meaningful with activities designed specifically for *Cast Your Vote*. This easy-to-use resource set means deeper learning for students and best practices around game-centered learning for you! Extension Packs require PowerPoint and are designed for use with projectors or interactive whiteboards. Find this great resource linked in the game page or in the Teach Hub.

